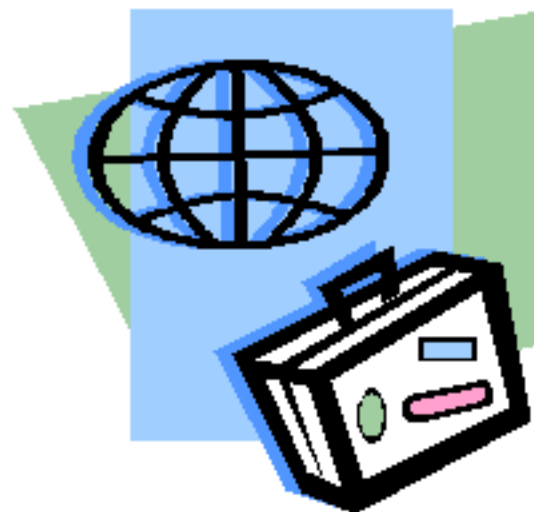


*Academic  
WorldQuest 2006*



We wish to acknowledge the generous contribution of the Community Foundation of Dutchess County. It is through a grant from their Robert R. Chapman Fund that the entire *Academic WorldQuest* program is being funded.

We wish to thank the staff of the Henry A. Wallace Center at the FDR Presidential Library and Home for their generous assistance and historic setting



# The 2006 Academic WorldQuest Committee

Rita Alterman

Joel Diemond

Joseph Lombardi

Jordan Heiligmann (Marist College intern)

# The 2006 Academic WorldQuest Judges

Martin Charwat

Joel Diemond

Jeffrey Urbin

# Our 2006 Academic WorldQuest Volunteers

Barbara Van Itallie

Ron Von Almen

Members of the Political  
Science Club at the Dutchess  
Community College

# This year's participating high schools

Arlington High School

F.D. Roosevelt High School

John Jay High School

Kingston High School

Marlboro High School

Oakwood Friends School

Poughkeepsie High School

The Poughkeepsie Day School

Roy C. Ketcham High School

Spackenkill High School

# HERE ARE THE RULES OF THE ROAD

1. THERE ARE 10 ROUNDS OF 10 QUESTIONS EACH
2. ALL OF THE QUESTIONS ARE MULTIPLE CHOICE OR IDENTIFICATION OF A PHOTO OR FLAG
3. YOU WILL HAVE ADEQUATE TIME TO ANSWER EACH QUESTION. HOWEVER, NO MORE THAN ONE MINUTE PER QUESTION
4. MARK YOUR TEAM'S ANSWER ON THE ANSWER SHEET PROVIDED
5. YOU WILL HAVE ONE ANSWER SHEET FOR EACH ROUND



6. ANSWER SHEETS WILL BE COLLECTED AFTER EACH ROUND
7. PRINT YOUR SCHOOL'S NAME ON THE ANSWER SHEET
8. AFTER ROUNDS 5 AND 10, THE QUIZMASTER WILL READ ALL OF THE CORRECT ANSWERS
9. THE TEAM STANDINGS, INCLUDING THE WINNING TEAM, WILL BE ANNOUNCED AFTER ROUND 10

# SCORING

- ONE POINT IS AWARDED FOR EACH CORRECT ANSWER
- THERE IS NO PENALTY FOR A WRONG ANSWER OR AN ANSWER LEFT BLANK **EXCEPT**, DURING THE TIE-BREAKER ROUND
- IF THERE IS A TIE FOR FIRST, SECOND, OR THIRD PLACE, A SUDDEN DEATH TIE-BREAKER WILL TAKE PLACE

# PLEASE NOTE!

- ANY TEAM FOUND WITH ANY MEANS OF ASSISTANCE OTHER THAN BRAIN POWER WILL BE **DISQUALIFIED**. PLEASE TURN OFF YOU CELLULAR PHONES AND REMOVE ANY HAND-HELD DEVICES, ATLASES, NOTES, ETC. FROM YOUR TABLE

*Academic WorldQuest 2006*



Round 1

*Current Events*



## *Current Events*

1. Israel has recently withdrawn settlers from
  - A. The Golan Heights
  - B. The Gaza Strip
  - C. Jericho
  - D. Sinai



## *Current Events*

2. Which of the following statements about Iraq is true?
- A. Sunnis comprise the majority of the population
  - B. In a recent election, the federal constitution that was drafted by the transitional government was rejected
  - C. There is an international court in charge of the trial of Saddam Hussein
  - D. In December, there will be new parliamentary elections for Iraq's first permanent post-war government



## *Current Events*

3. What is Gazprom?
- A. Poland's supervisory agency for natural gas
  - B. Russia's state controlled gas monopoly
  - C. The proposed natural gas pipeline near Baku, Azerbaijan
  - D. The privately held Russian company of billionaire Stensky



## *Current Events*

4. The American dispute with North Korea concerns the issue of North Korea's
  - A. Acquisition of nuclear weapons
  - B. Refusal to quarantine diseased birds and animals
  - C. Expanding armed forces
  - D. Boycott of American agricultural products





## *Current Events*

5. Darfur has been in the news because of a
- A. Massive earthquake
  - B. Successful AIDS prevention program
  - C. Civil war between rebels and the Sudanese government
  - D. Discovery of oil fields



## *Current Events*

6. Which Latin American president seems to be moving fastest in the direction of “21<sup>st</sup> century socialism”?
- A. Tabare Vasquez in Uruguay
  - B. Nestor Kirchner in Argentina
  - C. Juan Valdez in Colombia
  - D. Hugo Chavez in Venezuela



## *Current Events*

7. Tony Blair, the British Prime Minister, suffered his first defeat in the House of Commons in November, on the issue of

- A. Restricting immigration to the United Kingdom from non European nations
- B. Detaining terrorist subjects for up to 90 days without charges
- C. Signing long term contracts for the purchase of natural gas from Russia
- D. Maintaining a British military presence in Iraq



## *Current Events*

8. The German Chancellor who was displaced in recent elections was
- A. Helmut Kohl
  - B. Willie Brandt
  - C. Gerhard Schroeder
  - D. Karl Braun



## *Current Events*

9. The most recent Conference of the Americas was in
- A. Punta del Este, Uruguay
  - B. Vina del Mar, Chile
  - C. Mar del Plata, Argentina
  - D. Rio de Janeiro, Brazil

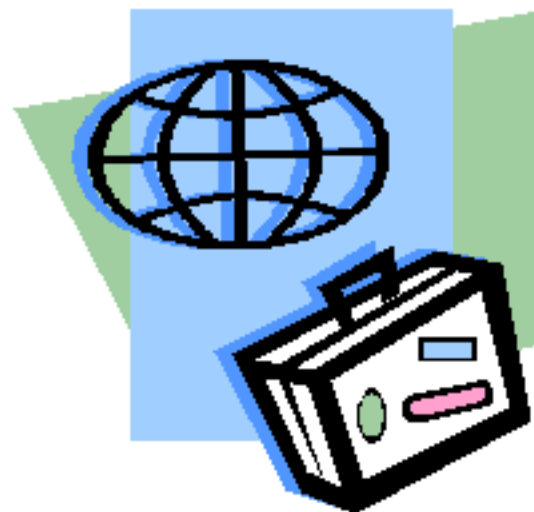


## *Current Events*

10. The former president of Haiti, who has been accused of stealing millions of dollars from the Haitian treasury, is

- A. Jean-Bertrand Aristide
- B. Dominique de Villepan
- C. Jean Francois Cordet
- D. Jacques Chirac

*Academic WorldQuest 2006*



Round 2

*People in the News*



*People in the News*

1. Angela Merkel is the new Chancellor of
  - A. Chile
  - B. New Zealand
  - C. Austria
  - D. Germany





*People in the News*

2. Which person is INCORRECTLY paired with his country
- A. Pervez Musharraf – Pakistan
  - B. Mohammed el Ernan – Afghanistan
  - C. Ariel Sharon – Israel
  - D. Bashar Assad – Syria



*People in the News*

3. Name the president of the Palestinian Authority

- A. Mahmoud Abbas
- B. Yasir Arafat
- C. Hamid Karzai
- D. Shimon Peres



*People in the News*

4. The Prime Minister of Japan is
- A. Seiji Maehara
  - B. Junichiro Koizumi
  - C. Katsuya Okada
  - D. Shintaro Ishihara



*People in the News*

5. Who is John Bolton?
- A. The new American ambassador to the United Nations
  - B. The American ambassador to Iraq
  - C. The president of South Africa
  - D. The commander of American forces in Iraq



*People in the News*

6. Rosa Parks, who recently died, has been identified with
- A. Environmental causes
  - B. AIDS prevention programs
  - C. Equal opportunities for women
  - D. The Civil Rights movement



*People in the News*

7. The new Chief Justice of the Supreme Court is
- A. Alberto Gonzales
  - B. John Roberts
  - C. Arlen Specter
  - D. Antonin Scalia



*People in the News*

8. Which of the following has never been a member of the Federal Reserve Board?
- A. Alan Greenspan
  - B. Paul Bernanke
  - C. Martin Feldstein
  - D. Paul Volker



*People in the News*

9. Grand Ayatollah Ali al-Sistani is
- A. Iran's "supreme leader"
  - B. The leader of the opposition to the American presence in Iraq
  - C. A Pakistani supporter of Osama Bin Laden
  - D. A Shia religious leader in Iraq



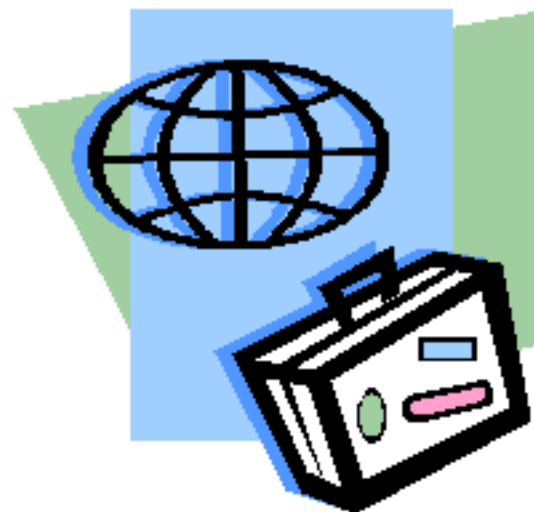


*People in the News*

10. Who is the new president of Iran?

- A. Mahmoud Ahmadinejad
- B. Akbar Hashemi Rafsanjani
- C. Mehdi Bazargan
- D. Ayatollah Khomeini

*Academic WorldQuest 2006*



Round 3

*Countries*



## *Countries*

1. Maoist guerrillas are a continuing threat to the stability of which Asian nation?
  - A. Kyrgyzstan
  - B. Tajikistan
  - C. Nepal
  - D. Bhutan



## *Countries*

2. The Chinese leader associated with the growth of capitalism in that country within the last quarter century
- A. Mao Zedong
  - B. Deng Xiaoping
  - C. Chou Enlai
  - D. K'ung-fu Tze



## *Countries*

3. All of the following are accurate statements about modern Turkey (since Ataturk) EXCEPT
- A. It will be admitted to the European Union in 2012
  - B. Its Prime Minister is Recep Erdogan
  - C. It was created by Mustafa Kemal Ataturk as a secular state
  - D. It lies in both Europe and Asia



## *Countries*

4. Ethnic differences between the Hausa, Fulani, Ibo, and Yoruba peoples have exacerbated the problems of governance in which of the following African states?

- A. Ghana
- B. Tanzania
- C. Sudan
- D. Nigeria



## *Countries*

5. Brazil, Bolivia, and Peru have which of the following items in common?
- A. A history of colonial domination by Spain
  - B. Disparity between the economic elites and the poor
  - C. Indigenous peoples accounting for a majority of the populations
  - D. A portion of the Andean mountain range within their borders



## *Countries*

6. All of the following oil exporting nations are members of OPEC (Organization of Petroleum Exporting Countries) EXCEPT
- A. Mexico
  - B. Saudi Arabia
  - C. Venezuela
  - D. Libya





## *Countries*

7. The 2006 Winter Olympic games will be held in which of the following countries?

- A. China
- B. Japan
- C. Switzerland
- D. Italy



## *Countries*

8. Which of the following rivers of China DOES NOT have its headwaters originating in the Tibetan Plateau?

- A. The Mekong
- B. The Amur
- C. The Huang Ho
- D. The Yangtze



## *Countries*

9. Luiz Inacio Lula da Silva is the president of which country in South America?
- A. Brazil
  - B. Argentina
  - C. Colombia
  - D. Chile

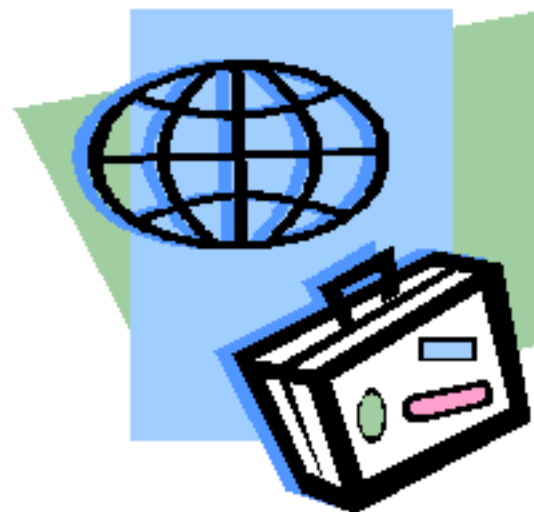


## *Countries*

10. The dream of building a railroad from Cairo to Capetown was associated with which 19<sup>th</sup> century colonial power in Africa?

- A. Germany
- B. France
- C. Great Britain
- D. Portugal

*Academic WorldQuest 2006*



Round 4

# *Flags of the World*



## *Flags of the World*

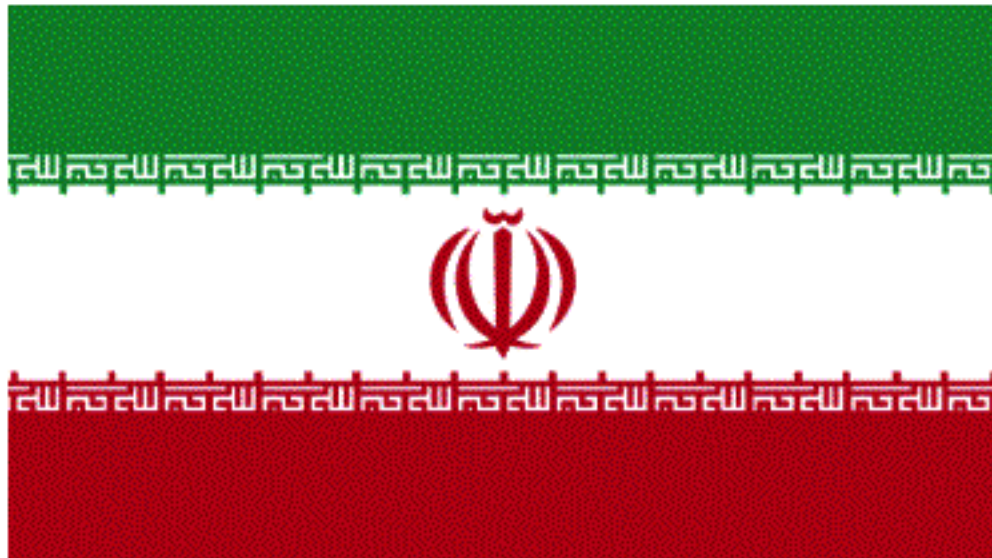
1. Name the country whose flag is pictured here





## *Flags of the World*

2. Name the country whose flag is pictured here





## *Flags of the World*

3. Name the country whose flag is pictured here







## *Flags of the World*

4. Name the country whose flag is pictured here





## *Flags of the World*

5. Name the country whose flag is pictured here





## *Flags of the World*

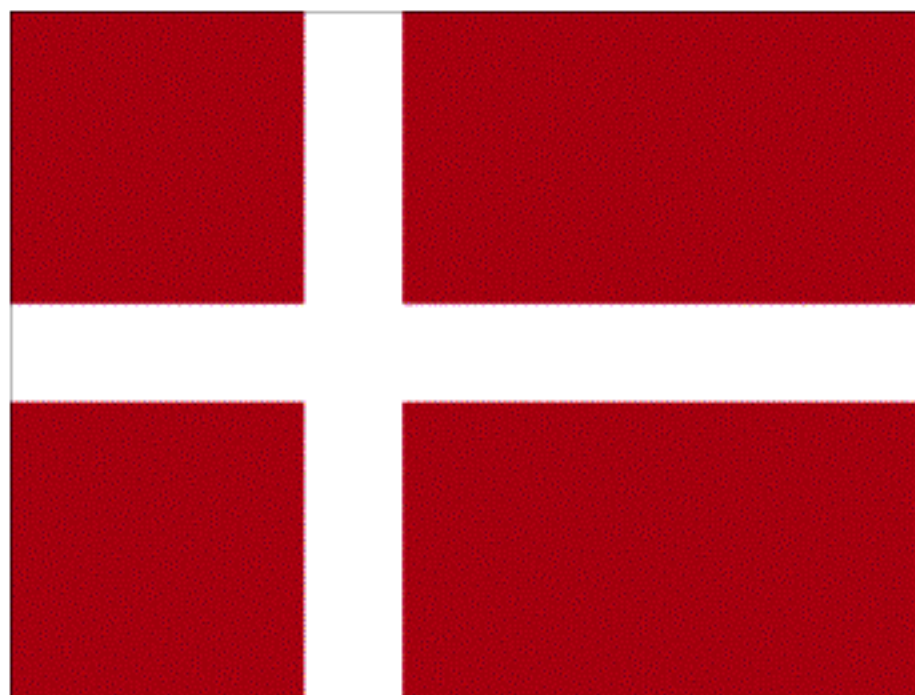
6. Name the country whose flag is pictured here





## *Flags of the World*

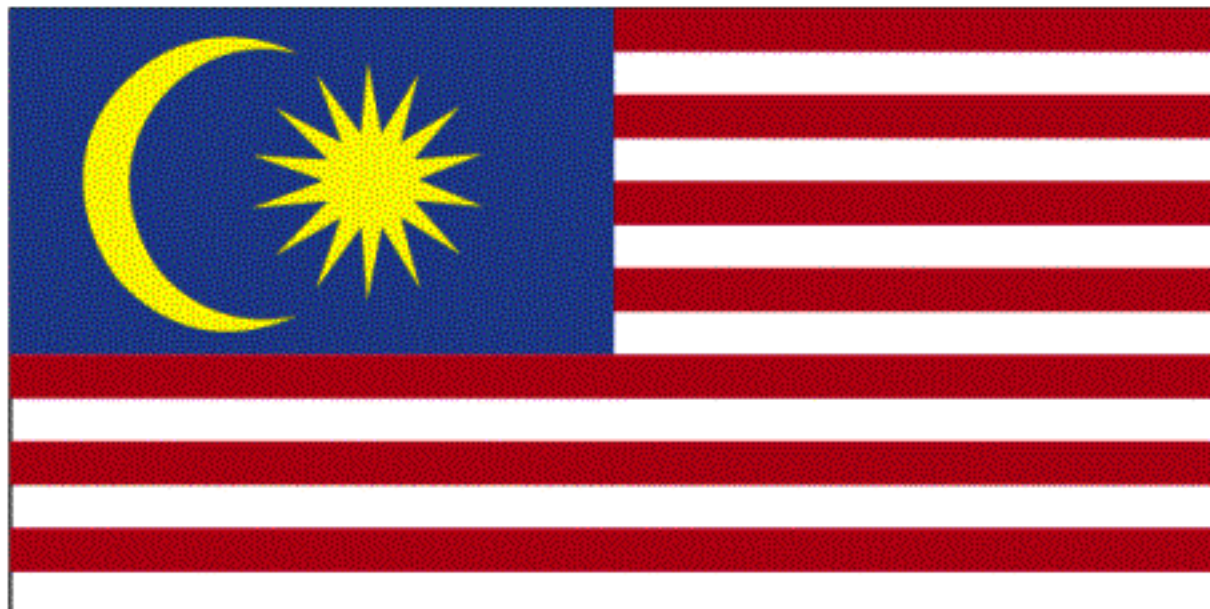
7. Name the country whose flag is pictured here





*Flags of the World*

8. Name the country whose flag is pictured here





*Academic WorldQuest 2006*



*Flags of the World*

9. Name the country whose flag is pictured here



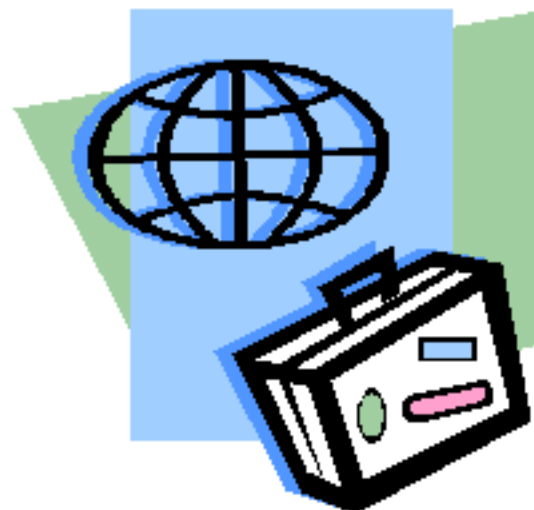


*Flags of the World*

10. Name the country whose flag is pictured here



*Academic WorldQuest 2006*



Round 5

*United Nations*





## *United Nations*

1. Which of the following is NOT a member of the UN family of organizations?
  - A. The WTO
  - B. The World Bank
  - C. UNESCO
  - D. NAFTA



## *United Nations*

2. The UN began in 1945 after a meeting of 50 nations in what city?
- A. San Francisco
  - B. Paris
  - C. New York
  - D. London



## *United Nations*

3. Which of the following is NOT one of the principal organs of the UN?
- A. The General Assembly
  - B. The Secretariat
  - C. The Economic and Social Council
  - D. The League of Nations



## *United Nations*

4. The UN annual budget for all UN operations excluding the International Monetary Fund, the World Bank and the International Fund for Agricultural Development is
- A. Under \$1 billion
  - B. Between \$2 and \$5 billion
  - C. Between \$10 and \$14 billion
  - D. Over \$25 billion



## *United Nations*

5. The UN has authorized complex and innovative peacekeeping operations which ended wars in all of the following EXCEPT

- A. Vietnam
- B. El Salvador
- C. Guatemala
- D. Cambodia



*United Nations*

6. Who among the following was never Secretary General of the UN?
- A. Boutros Boutros-Ghali
  - B. Thabo Mbeki
  - C. Javier Perez de Cuellar
  - D. Kurt Waldheim



*United Nations*

7. The number of member states to the UN is
- A. 120-140
  - B. 140-160
  - C. 160-180
  - D. 180-200



## *United Nations*

8. The Permanent International Criminal Court was established by a treaty of 120 nations and entered into force without the agreement of which of the following?

- A. Iran
- B. The United States
- C. Russia
- D. France





## *United Nations*

### 9. The UN Trusteeship Council

- A. Suspended operation in 1950 with the beginning of the Korean War
- B. Began operations in 1963 after the Cuban Missile Crisis
- C. Suspended operation in 1994 with the independence of Palau
- D. Began operation in 1975 with the end of the Vietnam War

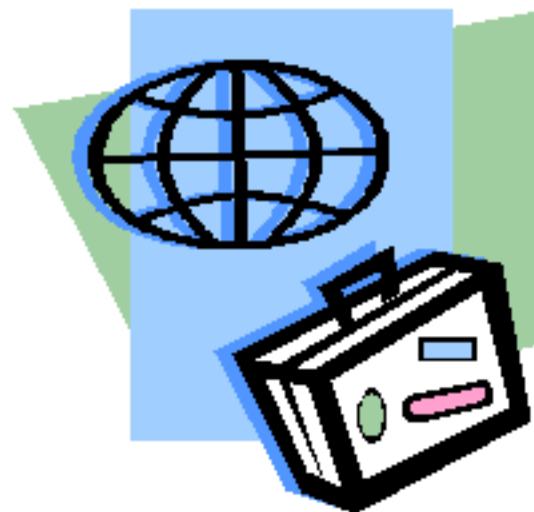


*United Nations*

10. The Permanent Court of International Justice meets in

- A. New York
- B. The Hague
- C. Rome
- D. Geneva

*Academic WorldQuest 2006*



Round 6

*U.S. Neighbors*



## *U.S. Neighbors*

1. Which statement is NOT true about Canada
  - A. It is the northernmost country in the world
  - B. It is composed of 15 provinces
  - C. Three-quarters of the population live within 150 km of the U.S. border
  - D. It is a member of the Commonwealth, an association of former British colonies



*U.S. Neighbors*

2. Which city is NOT in Canada
- A. Edmonton
  - B. Melbourne
  - C. Halifax
  - D. Winnipeg



## *U.S. Neighbors*

3. Canada has slightly more land than the United States, but what fraction of the population?
- A.  $1/2$
  - B.  $1/3$
  - C.  $1/6$
  - D.  $1/9$



## *U.S. Neighbors*

4. Which of the following Canadian Prime Ministers lost a confidence vote in the House of Commons within the last two weeks?

- A. Pierre Trudeau
- B. Lester Pearson
- C. Jean Chrétien
- D. Paul Martin



## *U.S. Neighbors*

5. When did Canada become the first British colony to be transformed into a self-governing dominion?
- A. 1763
  - B. 1867
  - C. 1910
  - D. 1921





*U.S. Neighbors*

6. The capital of Canada is
- A. Ottawa
  - B. Vancouver
  - C. Regina
  - D. Edmonton



*U.S. Neighbors*

7. The period of Spanish colonial rule in Mexico lasted
- A. 100 years
  - B. 200 years
  - C. 300 years
  - D. 400 years



## *U.S. Neighbors*

8. Cinco de Mayo celebrates which event?
- A. The achievement of independence from Spain in 1810
  - B. The formation of the first Republic of Mexico in 1834
  - C. The defeat of the French army seeking to place Maximilian as the emperor of Mexico in 1862
  - D. The defeat of the federal army in 1910 by Mexican revolutionary forces



## *U.S. Neighbors*

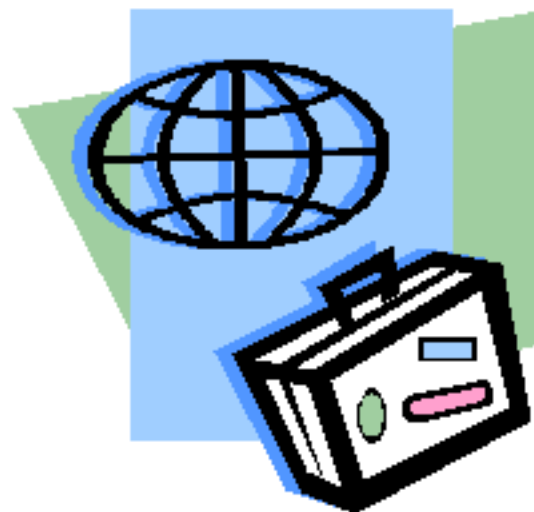
9. Which Mesoamerican group's religious beliefs are associated with human sacrifice?
- A. Zapotec
  - B. Tula
  - C. Toltecs
  - D. Aztecs



## *U.S. Neighbors*

10. Which statement about Mexico is FALSE?
- A. Mexico is divided into 31 states
  - B. Mexico is bordered by Costa Rica and Panama to the south east
  - C. Mexico is  $\frac{1}{4}$  the size of the United States
  - D. Mexico's two peninsulas are Baja California and the Yucatan

*Academic WorldQuest 2006*



Round 7

*Famous Landmarks*



## *Famous Landmarks*

1. The following landmark is

- A. The Aztec Ruins  
National Monument,  
New Mexico
- B. Mesa Verde, Colorado
- C. The Mayan Ruins,  
Uxmal, Mexico
- D. Machu Picchu, Peru







## *Famous Landmarks*

2. The following landmark is

- A. The Pu Tuo Temple,  
Guang Dong, China
- B. The Yasukuni Shrine,  
Tokyo, Japan
- C. The Meiji Shrine,  
Tokyo, Japan
- D. Angor Wat, Cambodia







## *Famous Landmarks*

3. The following landmark is

- A. The Hands of Victory, Iran
- B. The Hands of Victory, Syria
- C. The Hands of Victory, Iraq
- D. The Hands of Victory, Egypt





## *Famous Landmarks*

4. The following landmark is

- A. Ayer's Rock, Australia
- B. Devil's Rock, Nevada
- C. Table Mountain,  
Capetown South Africa
- D. Basalt Dome, New  
Mexico





## *Famous Landmarks*

5. The following landmark is

- A. The Prophet's Mosque, Mecca, Saudi Arabia
- B. Hagia Sophia, Istanbul
- C. Mohamed Ali Mosque, Cairo
- D. The Blue Mosque, Isfahan, Iran



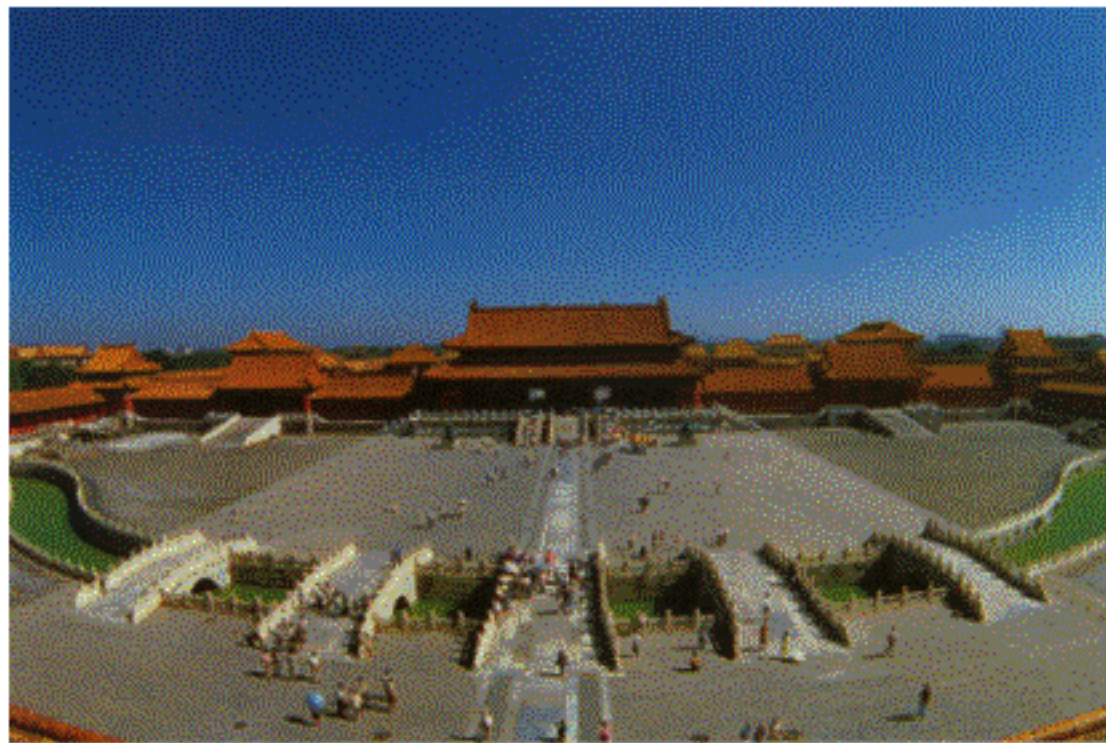




## *Famous Landmarks*

6. The following landmark is

- A. The Imperial Palace,  
Tokyo Japan
- B. The Forbidden City,  
China
- C. Shurijo Castle,  
Okinawa  
Japan
- D. The Imperial Palace,  
Xian China





## *Famous Landmarks*

7. The following landmark is

- A. Mount Fuji, Japan
- B. Denali, Alaska
- C. Mount Everest, Nepal
- D. Mount Kilimanjaro, Tanzania

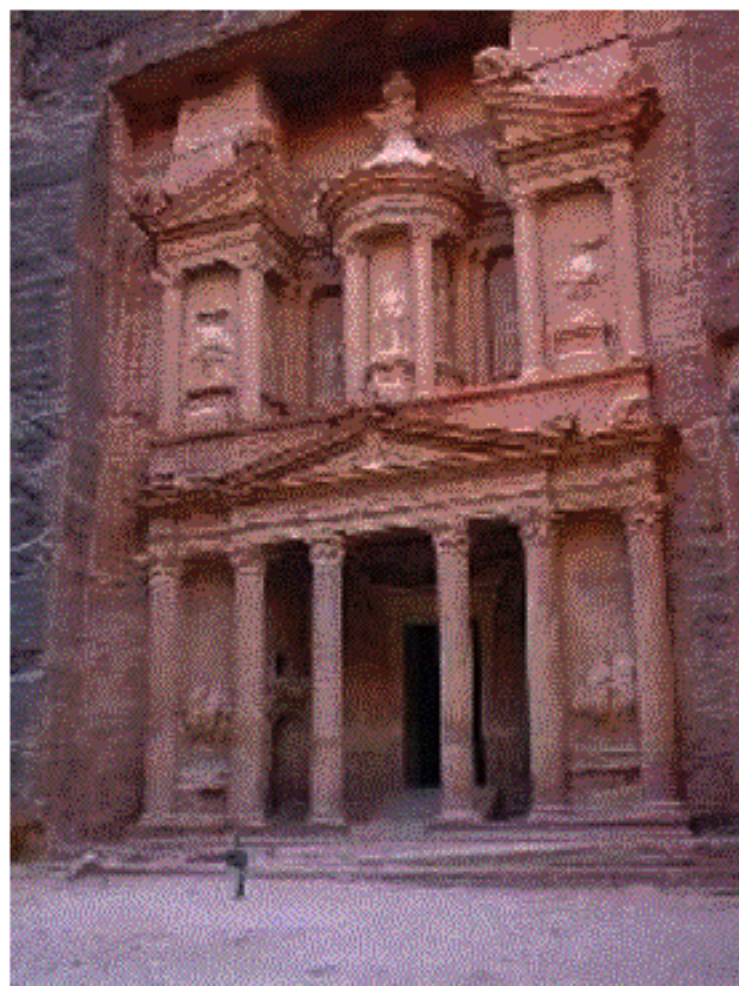




## *Famous Landmarks*

8. The following landmark is in

- A. Ephesus, Turkey
- B. Petra, Jordan
- C. Hadrian's Villa, Rome
- D. Bulla Regia, Tunisia







## *Famous Landmarks*

9. The following landmark is

- A. The Alma Ata tower,  
Kazakhstan
- B. The Liberation Tower,  
Kuwait
- C. The Fernsehturm,  
Berlin Germany
- D. The Oriental Pearl  
Tower, Shanghai China



*Academic WorldQuest 2006*



*Famous Landmarks*

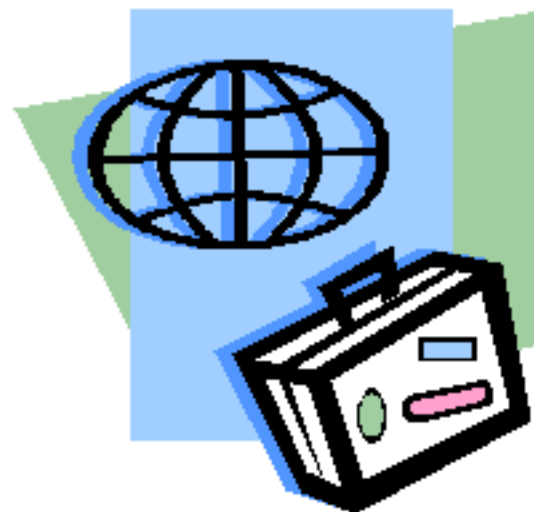
10. The following landmark is

- A. The Mall of America,  
Minnesota USA
- B. The FBI Headquarters,  
Washington D.C.
- C. The CIA headquarters,  
Langley Virginia
- D. The General Motors  
Headquarters, Detroit  
Michigan





*Academic WorldQuest 2006*



Round 8

*Peoples of the World*



## *Peoples of the World*

1. Punjabi, Rajasthani, Gujarati and Hindi are major languages spoken in
  - A. Pakistan
  - B. Bangladesh
  - C. India
  - D. Tibet



## *Peoples of the World*

2. Turkic languages are spoken widely by all the following ethnic groups EXCEPT

- A. Uzbeks
- B. Kazakhs
- C. Uyghurs
- D. Afghans



*Peoples of the World*

3. Shia Muslims constitute a majority of the population of
- A. Iran
  - B. Indonesia
  - C. Saudi Arabia
  - D. Egypt



## *Peoples of the World*

4. The Indo-European family of languages is widely dispersed around the world. A majority of the people in which country DO NOT speak a language classified as an Indo-European language?

- A. The United States
- B. Iran
- C. Russia
- D. Mongolia



*Peoples of the World*

5. The largest ethnic component in the nation of Singapore is
- A. Malay
  - B. South Asian Indian
  - C. Chinese
  - D. The indigenous



## *Peoples of the World*

6. Traveling through all parts of the Iberian Peninsula, one would be least likely to encounter which of the following languages?

- A. Portuguese
- B. Catalan
- C. Romansch
- D. Basque



*Peoples of the World*

7. Buddhism was an important influence on the culture of which of the following states?
- A. Thailand and Vietnam
  - B. Iran and Vietnam
  - C. Syria and Egypt
  - D. Russia and Georgia





*Peoples of the World*

8. Cassava is an important source of carbohydrate in the foods of

- A. South Asia
- B. East Asia
- C. South America
- D. Southern Africa



## *Peoples of the World*

9. Hungarian belongs to which of the following language groups?
- A. Slavic
  - B. Indo European
  - C. Finno-Ugric
  - D. Austronesian



*Peoples of the World*

10. The dominant pre-colonial language in the Philippines, which is still spoken there, is

- A. Hindi
- B. Tagalog
- C. Sulu
- D. Chinese

*Academic WorldQuest 2006*



Round 9

*Nobel Prize Winners*



## *Nobel Prize Winners*

1. Which of the following U.S. presidents never received the Nobel Peace Prize?
  - A. Jimmy Carter
  - B. Theodore Roosevelt
  - C. Woodrow Wilson
  - D. Franklin Roosevelt



*Nobel Prize Winners*

2. This year, the Nobel Peace Prize went to
- A. Mohamed el Baradei
  - B. Daw Aung San Suu Kyi
  - C. Kofi Annan
  - D. The 14<sup>th</sup> Dalai Lama



## *Nobel Prize Winners*

3. Two recipients of the Nobel Prize voluntarily refused to accept it. They were
- A. Ernest Hemingway and Simone de Beauvoir
  - B. J.D. Salinger and Wang Ming
  - C. Yukio Mishima and V.S. Naipaul
  - D. Jean-Paul Sartre and Le Duc Tho



## *Nobel Prize Winners*

4. This year's Nobel Prize in Economics was awarded to
- A. R. Aumann and T. Schelling for their work in game theory
  - B. R. Barro and P. Krugman for their work in international economics
  - C. J. Bhagwati and J. Stiglitz for their work in trade theory
  - D. P. Samuelson and B. Bernanke for their work in macroeconomic theory





*Nobel Prize Winners*

5. The Nobel Prize in Literature this year was awarded to
- A. Poet Derek Walcott
  - B. Playwright Harold Pinter
  - C. Novelist Naguib Mahfouz
  - D. Short story writer John Cheever



## *Nobel Prize Winners*

6. When the Nobel Committee feels that there are no outstanding achievements on which they agree in a given year, they decline to offer a prize. This has happened most often in the award for

- A. Peace
- B. Medicine
- C. Chemistry
- D. Physics



## *Nobel Prize Winners*

7. Alfred Nobel, who established the Nobel Prizes in his will, made a great fortune from his invention of
- A. Dynamite
  - B. Incandescent light bulbs
  - C. The first antibiotics
  - D. The internal combustion engine



*Nobel Prize Winners*

8. Francis Crick and James Watson were awarded the Nobel Prize for Medicine in 1962 for their discovery of

- A. A polio vaccine
- B. The DNA double helix
- C. The first flu vaccine
- D. The origins of malaria



## *Nobel Prize Winners*

9. Alexander Fleming, Ernst Chain, and Howard Florey were awarded the Nobel Prize in Medicine for discovering

- A. The RNA molecule
- B. The first anti-cancer vaccine
- C. Penicillin
- D. A cure for AIDS

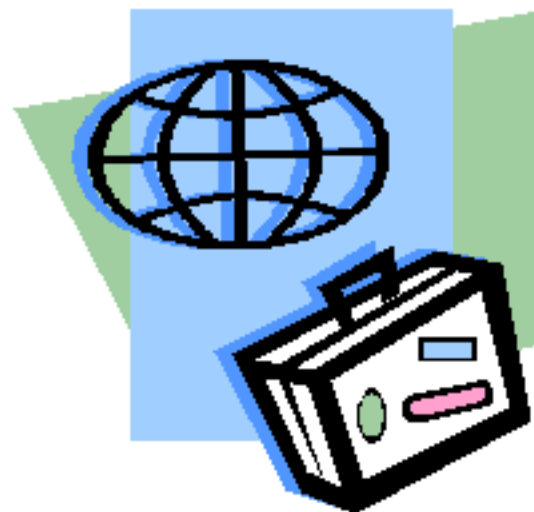


## *Nobel Prize Winners*

10. The Nobel Foundation is located in which city?

- A. Geneva
- B. Stockholm
- C. Brussels
- D. Copenhagen

*Academic WorldQuest 2006*



Round 10

*Great Decisions 2006*



*Great Decisions 2006*

1. How many people in the world do NOT have access to safe drinking water?

- A. 5.7 million
- B. 8.2 million
- C. 1.1 billion
- D. 3.2 billion





*Great Decisions 2006*

2. Which city in the “Sunni Triangle” had been the bedrock of a violent insurgency until a US campaign in November, 2004?

- A. Baghdad
- B. Mosul
- C. Basra
- D. Falluja



*Great Decisions 2006*

3. How does the World Bank describe people living in “extreme poverty”?
- A. Those living on less than \$1 per day
  - B. Those living on less than \$.50 per day
  - C. Those living on \$2 per day
  - D. None of the above



*Great Decisions 2006*

4. Since 1981, the percentage of people living in extreme poverty in China has decreased from 64 percent to 17 percent. How many people have been lifted above the poverty line in China?

- A. Over 100 million
- B. Over 200 million
- C. Over 400 million
- D. Over 800 million



*Great Decisions 2006*

5. According to a recent World Bank study of 52 civil conflicts, what was the underlying cause?
- A. Ethnic tension
  - B. Economic forces
  - C. Ancient political feuds
  - D. Language differences



*Great Decisions 2006*

6. The last period of democratic rule in the Sudan ended in 1989 when this individual stormed parliament with his troops and arrested secular politicians.

- A. Colonel John Garang
- B. General Omar Hassan al-Bashir
- C. Colonel Gaafar Mohamed Nimeiri
- D. Hassan al-Turabi, leader of the Muslim Brotherhood



*Great Decisions 2006*

7. After clashing with two rebel groups in the Darfur region, the government in Khartoum has been accused of
- A. Allowing the rebel groups to fight among themselves
  - B. Supporting the anti-rebel militia known as the “Janjaweed” in their destruction of Darfur villages
  - C. Soliciting aid from other countries to stop the violence
  - D. Negotiating an autonomy agreement with the Darfur rebels



*Great Decisions 2006*

8. In recent years, the disparity of per capita income of rural and urban Chinese workers has
- A. Decreased
  - B. Remained the same
  - C. Increased
  - D. There has been no disparity



*Great Decisions 2006*

9. Which of the formerly Soviet states have most recently been incorporated into the North Atlantic Treaty Organization?

- A. Moldova, Ukraine, Lithuania
- B. Lithuania, Estonia, Kyrgyzstan
- C. Estonia, Latvia, Lithuania
- D. Georgia, Azerbaijan, Armenia

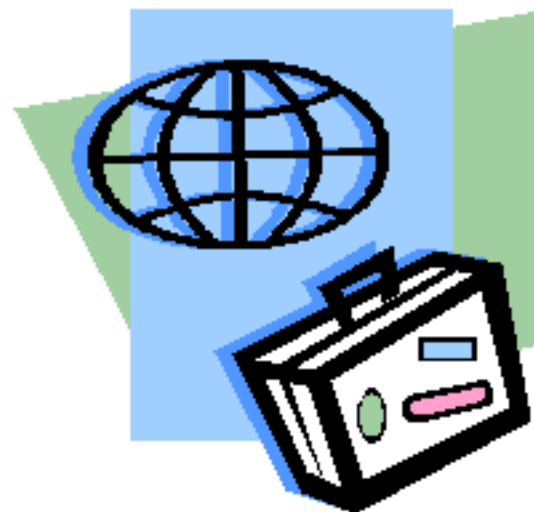




*Great Decisions 2006*

10. The current director of the CIA is
- A. Porter Goss
  - B. Richard Clarke
  - C. Tom Ridge
  - D. George Tenet

*Academic WorldQuest 2006*



*Roosevelt Round*

*Academic WorldQuest 2006*



*Roosevelt Round*

1. President Roosevelt's Pet Pooch was named
  - A. Fella
  - B. Fala
  - C. Bella
  - D. Della



## *Roosevelt Round*

2. What were the four freedoms that Roosevelt articulated in his 1941 State of the Union Address as fundamental to the safeguarding of democracy?

- A. Fear, Worship, Fraternity, Speech
- B. Life, Liberty, Worship, Speech
- C. Wealth, Worship, Fraternity, Speech
- D. Fear, Want, Worship, Speech



## *Roosevelt Round*

3. Franklin and Eleanor Roosevelt were actually already distant relatives when they married in 1905. They were
- A. First cousins, once removed
  - B. Uncle and niece
  - C. Fifth cousins, once removed
  - D. Step brother and step sister



## *Roosevelt Round*

4. As a result of Franklin Roosevelt's unprecedented election to four terms, which amendment was added to the constitution to essentially limit a president to only two terms?
- A. The 14<sup>th</sup>
  - B. The 19<sup>th</sup>
  - C. The 22<sup>nd</sup>
  - D. The 25<sup>th</sup>



## *Roosevelt Round*

5. In the ill-fated – so called – “court packing” incident, FDR proposed increasing the number of Supreme Court Justices from

- A. 9 to 12
- B. 12 to 15
- C. 6 to 9
- D. 9 to 15



## *Roosevelt Round*

6. On December 7, 1941, FDR described the date as “a date that will live in infamy”. Originally, he had thought to describe it as
- A. A date that will live for infinity
  - B. A date that will live in world history
  - C. A date we will forever remember
  - D. A date that will live in history





*Roosevelt Round*

7. In all, approximately how many new programs did the New Deal create?

- A. 5-15
- B. 16-25
- C. 26-35
- D. 36-45



## *Roosevelt Round*

8. Due to space considerations, at any given time the Roosevelt Presidential Library can display only about what percent of the material it actually has?

- A. 3-5%
- B. 10-20%
- C. 30-35%
- D. 40-50%



## *Roosevelt Round*

9. For her work at the United Nations, which American President gave Mrs. Roosevelt the title, “First Lady of the World”?

- A. Franklin D. Roosevelt
- B. Dwight D. Eisenhower
- C. Harry S. Truman
- D. John F. Kennedy

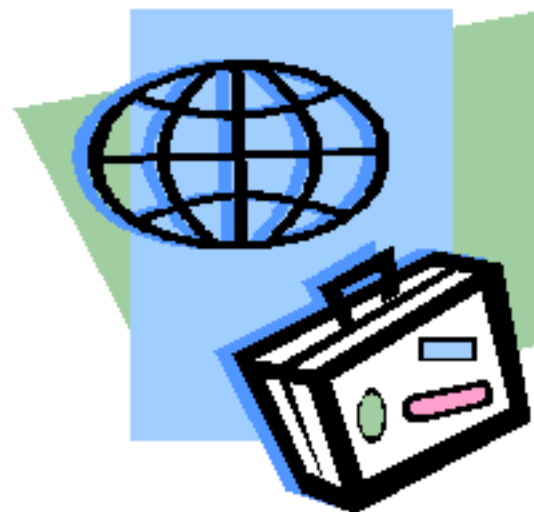


## *Roosevelt Round*

10. At her marriage to Franklin Roosevelt on March 17, 1905, Eleanor Roosevelt was “given away” by

- A. Woodrow Wilson
- B. Theodore Roosevelt
- C. Elliot Roosevelt
- D. James Delano

*Academic WorldQuest 2006*



*Tie Breakers*



## *Tie Breakers*

1. The city of Beslan, the site of the 2004 terrorist attack on a school, is in which Russian region
  - A. Dagestan
  - B. North Ossetia
  - C. Chechnya
  - D. Tartarstan



## *Tie Breakers*

2. The Kadima is
- A. A traditional Japanese dance form
  - B. An African plant known to reduce obesity
  - C. The world's newest luxury resort in Dubai
  - D. A new political party in Israel



## *Tie Breakers*

3. Poland is surrounded by 7 countries. Name the countries. ONE POINT WILL BE AWARDED FOR EACH CORRECT ANSWER AND ONE POINT WILL BE DEDUCTED FOR EACH INCORRECT ANSWER.